



# EU Framework Programme 7

# The Marie Curie Actions

Anett Kiss

Grants Office, Umeå University

16 May 2011

Centre for Regional Science



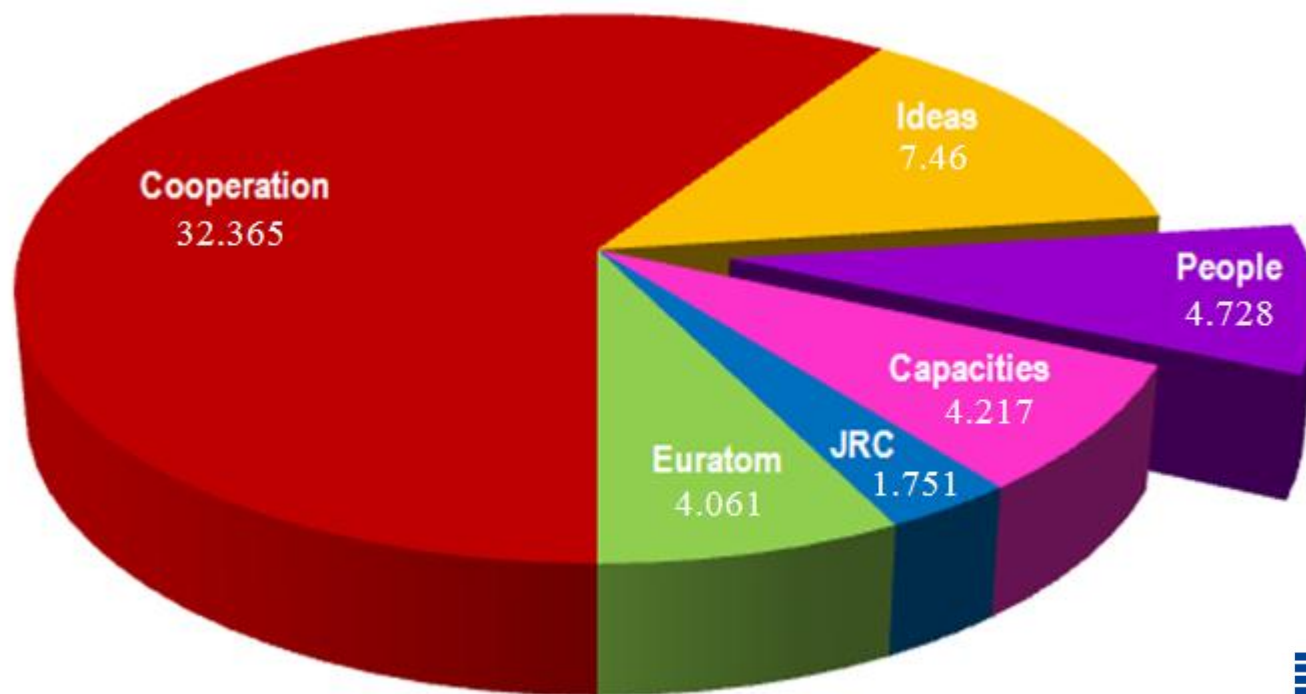


# European Framework Programme 7

Cooperation (collaborative projects)

Ideas (individual excellent research)

**People (Marie Curie Actions)**



Total budget 2007-2013: 54,582 billion Euros





# Countries eligible for EU funding

## EU Member States (MS):

<i>Austria</i>	<i>Latvia</i>
<i>Belgium</i>	<i>Lithuania</i>
<i>Bulgaria</i>	<i>Luxembourg</i>
<i>Cyprus</i>	<i>Malta</i>
<i>Czech Republic</i>	<i>The Netherlands</i>
<i>Denmark</i>	<i>Poland</i>
<i>Estonia</i>	<i>Portugal</i>
<i>Finland</i>	<i>Romania</i>
<i>France</i>	<i>Slovakia</i>
<i>Germany</i>	<i>Slovenia</i>
<i>Greece</i>	<i>Spain</i>
<i>Hungary</i>	<i>Sweden</i>
<i>Ireland</i>	<i>United Kingdom</i>
<i>Italy</i>	



## Associated Countries (AC):

<i>Albania</i>	<i>Israel</i>
<i>Bosnia and Herzegovina</i>	<i>Liechtenstein</i>
<i>Croatia</i>	<i>Montenegro</i>
<i>Faroe Islands</i>	<i>Norway</i>
<i>FYR Macedonia</i>	<i>Serbia</i>
<i>Iceland</i>	<i>Switzerland</i>
	<i>Turkey</i>

Other countries may also be eligible depending on the call.



# People = Marie Curie Actions



**From pure mobility actions to a dedicated programme for structuring training, mobility and career development**

## **Objectives:**

- Strengthening the human potential in Research and Development in Europe
- Stimulate people to enter into the profession of researcher
- Encouraging researchers to stay in Europe
- Attracting researchers from around the world
- Addressed to researchers at all stages of their careers



# People = Marie Curie Actions



## **Main characteristics:**

- Open to all domains of research (bottom-up approach)
- Application through calls for proposals
- Selection criteria:
  - Science and technological quality
  - Quality of participants
  - Quality of training or transfer of knowledge
  - Impact
  - Implementation
- Trans-national and inter-sectorial mobility
- Budget covers mainly salaries of researchers





# People = Marie Curie Actions



<b>Individual Actions</b>	<b>Host Driven Actions</b>
Intra-European Fellowships (IEF)	Initial Training Networks (ITN)
International Incoming Fellowships (IIF)	Industry Academia Partnerships and Pathways (IAPP)
International Outgoing Fellowships (IOF)	International Research Staff Exchange Scheme (IRSES)
Career Integration Grants (CIG)	



Profile of recruited researchers

Very experienced researchers  
(Senior post-docs)  
**>10 years research experience**



Experienced researchers  
(mainly post-docs)  
**>4 years research experience**  
*OR/AND*  
**a PhD**



Early-stage researchers  
(post-graduates)  
**< 4 years research experience**  
*AND*  
**NO PhD**



Applicants

Individual  
researchers

Research  
Institutions/  
Industry

IEF  
IOF  
IIF  
CIG

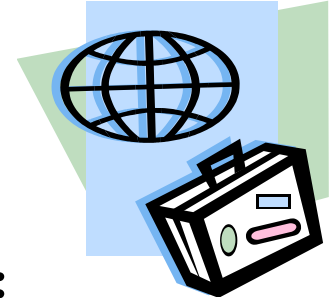
IAPP  
IRSES

ITN

**Research experience** is measured from the date when a researcher obtained the degree which would formally entitle him or her to embark on a doctorate



# Mobility requirements



**For most Marie Curie Actions a mobility rule applies:**

- Must not have been resident in host country for **more than 12 months in the last 3 years** immediately before application deadline/ date of recruitment or secondment
- In case of international organisations cannot have been working at the host institute for more than 12 months in the last 3 years
- Researchers can now return to the country of their nationality if the mobility rule is respected

**In order to assess eligibility it is essential to consider the following:**

- The minimum or maximum amount of research experience stipulated for the action
- The transnational mobility requirements for the action





# Marie Curie Fellowships

## Types of fellowships according to the mobility action:

- **Intra-European Fellowships for Career Development (IEF)**



- **International Outgoing Fellowships for Career Development (IOF)**



- **International Incoming Fellowships (IIF)**



**Duration of grant:** 1-2 years

### **Eligibility:**

- Min. 4 years postgraduate research experience OR a PhD
- Nationality:
  - IEF: any
  - IIF: any
  - IOF: MS/AC or having lived in a MS/AC for at least the last 5 years

**Budget:** mainly salary of the fellow and research/training costs

**Next deadline for fellowships: 11 August 2011 (call open)**



# Career Integration Grants (CIG)



## **Focus:**

to improve the prospects for the permanent **integration** of researchers who are offered a **stable research post** in Europe in a country different from the one where the researcher has been active during the past years

**Duration:** 2-4 years

## **Eligibility:**

- Min. 4 years postgraduate research experience OR a PhD
- Any nationality
- Mobility: from any country to a MS/AC

**Budget:** Flat rate 25000 EUR/year to cover the research costs

(no strict rules on spending)

**Next deadline:** 06 September 2011 (call open)



# Initial training networks (ITN)

## **Aim:**

A **joint training programme** mainly for early-stage researchers including complementary skills modules



## **Participants:**

- Min. 3 partners from different Member States or Associated Countries
- Both **public** and **private** sector has to be involved
- Associated partners can complement the training

**Duration:** 4 years

## **Recruitments:**

- Early-stage researchers
- Experienced researchers (<5 years experience)

## **Budget:**

- Recruited researcher's expenses (living and mobility allowance)
- Host's expenses (research/training/transfer of knowledge activities, management costs, contribution to overheads)

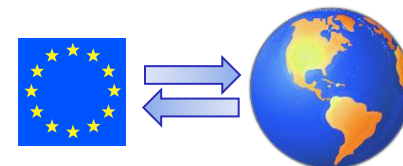
**Next deadline:** expected in January 2012 (no call published yet)



# International Research Staff Exchange Scheme (IRSES)

## **Aim:**

To strengthen research partnerships through short period staff exchanges and networking activities between *European and Third country research organisations*



## **Participants:**

- At least 2 participant from different MS or AC
- at least 1 participant from an eligible Third Country (has an S&T Agreement with EU or is covered by the European Neighbourhood Policy)

**Duration:** 2-4 years

**Secondments:** Balanced exchanges between the European and the Third Country partners for up to 12 months, any experience level

## **Budget:**

MS/AC: 1900 EUR/person/month for visits from a MS/AC to a Third country (long-distance exchanges: extra 200 EUR/p/m)

Third countries are supposed to cover their own expenses, low income countries can receive contribution towards their costs

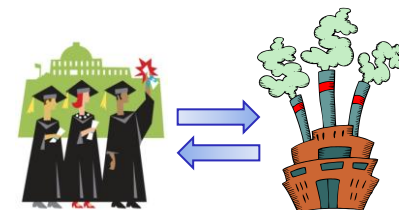
**Next deadline:** expected in February 2012 (no call published yet)



# Industry Academia Partnerships and Pathways (IAPP)

## **Aim:**

To enhance *industry-academia cooperation* in terms of research training, career development and knowledge sharing



## **Participants:**

- At least 1 participant from academia and 1 from industry from different Member States or Associated Countries

**Duration:** 4 years

**Secondments for 2-24 months** (between sectors):

- any experience level

**Recruitments for 12-24 months:**

- experienced researchers (at both levels)

## **Budget:**

- Salary for the recruited and seconded researchers
- Host's expenses (research/training/transfer of knowledge activities, management costs, contribution to overheads)

**Next deadline:** expected in April 2012 (no call published yet)





# How to apply – The FP7 Cordis website

<http://cordis.europa.eu/fp7/>

The screenshot shows the European Commission CORDIS website. The navigation menu includes Home, News, Funding, Results, Themes, Go local, Look it up, Interact, and Help. The main content area is titled "Seventh Framework Programme (FP7)" and features a search bar for "Search all CORDIS". A sidebar on the left lists various options, with "Find a call" highlighted in a red circle. The main content area is divided into sections for "FP7 Calls", "Cooperation", "Ideas", "People", "Capacities", and "Euratom". Under the "People" section, there are tabs for "Open Calls", "Closed Calls", "Forthcoming Calls", and "Cofunded Calls". A sub-section for "Marie-Curie Actions" shows "6 Open calls". Below this, a table lists "Calls for proposals" with columns for Call Identifier, Call Title, Publication Date, and Deadline.

Call Identifier	Call Title	Publication Date	Deadline
FP7-PEOPLE-2011-CIG	MARIE CURIE CAREER INTEGRATION GRANTS (CIG)	2010-10-20	2011-09-06
FP7-PEOPLE-2011-IEF	MARIE CURIE INTRA-EUROPEAN FELLOWSHIPS FOR CAREER DEVELOPMENT (IEF)	2011-03-16	2011-08-11
FP7-PEOPLE-2011-IIF	MARIE CURIE INTERNATIONAL INCOMING FELLOWSHIPS (IIF)	2011-03-16	2011-08-11
FP7-PEOPLE-2011-IOF	MARIE CURIE INTERNATIONAL OUTGOING FELLOWSHIPS FOR CAREER DEVELOPMENT (IOF)	2011-03-16	2011-08-11
FP7-PEOPLE-2011-NCP	Trans-national cooperation among NCPs (NCP)	2011-03-10	2011-06-22
FP7-PEOPLE-2011-EURAXESS-II	Trans-national operation of the "EURAXESS Services Network II": 2011-2013	2010-12-15	2011-03-30

**Proposal submission:**

Electronic Proposal Submission Service (EPSS): <https://www.epss-fp7.org/>



# Marie Curie Calls



ACTION	CALL ID	OPENS	DEADLINE
<b>ACTION I - INITIAL TRAINING OF RESEARCHERS</b>			
Initial Training Networks (ITN)	<i>FP7-PEOPLE-2012-ITN</i>	<b>July 2011*</b>	<b>Jan 2012*</b>
<b>ACTION II - LIFELONG TRAINING AND CAREER DEVELOPMENT</b>			
Intra-European Fellowships (IEF) (IA)	<i>FP7-PEOPLE-2011-IEF</i>	<b>16-03-2011</b>	<b>11-08-2011</b>
Career Integration Grants (CIG) (IA)	<i>FP7-PEOPLE-2011-CIG</i>	<b>20-10-2010</b>	<b>06-09-2011</b>
Co-funding of Regional, National, and International Programmes (COFUND)	<i>FP7-PEOPLE-2012-COFUND</i>	<b>Oct 2011*</b>	<b>Feb 2012*</b>
<b>ACTION III - INDUSTRY - ACADEMIA KNOWLEDGE SHARING</b>			
Industry-Academia Partnerships and Pathways (IAPP)	<i>FP7-PEOPLE-2012-IAPP</i>	<b>Oct 2011*</b>	<b>April 2012*</b>
<b>ACTION IV - INTERNATIONAL DIMENSION – WORLD FELLOWSHIPS</b>			
International Outgoing Fellowships (IOF) (IA)	<i>FP7-PEOPLE- 2011-IOF</i>	<b>16-03-2011</b>	<b>11-08-2011</b>
International Incoming Fellowships (IIF) (IA)	<i>FP7-PEOPLE-2011-IIF</i>	<b>16-03-2011</b>	<b>11-08-2011</b>
International Research Staff Exchange Scheme (IRSES)	<i>FP7-PEOPLE-2012-IRSES</i>	<b>Oct 2011*</b>	<b>Feb 2012*</b>

\* *Planned but not yet published calls.*



Contact us: [www.umu.se/grantsoffice/](http://www.umu.se/grantsoffice/)

<p><b>Lars Wikman</b> Head of Office Phone: 090-786 6097 Mobile: 070-555 5117 <a href="mailto:lars.wikman@adm.umu.se">lars.wikman@adm.umu.se</a></p>	<p><b>Karl Jäghagen</b> Research Coordinator Phone: 090-786 6649 Mobile: 070-510 8681 <a href="mailto:karl.jaghagen@adm.umu.se">karl.jaghagen@adm.umu.se</a></p>
<p><b>Anders Wennström</b> Research Coordinator Phone: 090-786 6225 Mobile: 070-272 0147 <a href="mailto:anders.wennstrom@adm.umu.se">anders.wennstrom@adm.umu.se</a></p>	<p><b>Sussi Mikaelsson</b> Budget advisor Phone: 090-786 7929 Mobile: 070-654 1204 <a href="mailto:sussi.mikaelsson@adm.umu.se">sussi.mikaelsson@adm.umu.se</a></p>
<p><b>Tina Nordström</b> Legal Counsel Phone: 090-786 9285 <a href="mailto:tina.nordstrom@adm.umu.se">tina.nordstrom@adm.umu.se</a></p>	<p><b>Tony Scully</b> Research coordinator Mobile: 070-554 4428 <a href="mailto:tony.scully@adm.umu.se">tony.scully@adm.umu.se</a></p>
	<p><b>Anett Kiss</b> FP7 People (Marie Curie) Programme Mobile: 070-295 4515 <a href="mailto:anett.z.kiss@plantphys.umu.se">anett.z.kiss@plantphys.umu.se</a></p>